

FIXED PRICE HOUSE & LAND

Bellmont 223



Fixed Site Costs Included
 Rock Removal Included
 Council & Developer Requirements Included
 Bushfire Requirements Included

+

Essential Inclusions Value Pack Included

2590mm High Ceilings throughout
 Laminate Flooring throughout living areas
 Carpet throughout remainder of the home
 Flyscreens to all openable windows
 Window locks to all openable windows
 External door lock to all sliding doors
 Remote Control to Garage
 Corinthian PMAD 101 Feature Entry Door
 Gainsborough Trilock Feature Entry Door Handle
 20mm Stone Benchtops throughout Kitchen
 900mm Omega S/Steel Freestanding Oven/Cooktop
 900mm Omega S/Steel Canopy Rangehood
 Designer Upgrade Double Bowl Kitchen Sink
 Designer Upgrade Chrome Lever Kitchen Sink Mixer Kitchen
 Overhead Cupboards with Plaster bulkhead
 Double Vanity with additional basin to Ensuite
 900 x 1200mm Polymarble Shower base to Ensuite
 Designer Shower Rail/Rose & Mixer to Ensuite.
 Semi-Frameless Shower screens with pivot doors
 Privacy locks to all Bathrooms, WC & Powder Room
 Toilet Roll Holders throughout
 Towel Rails throughout
 Towel Rings throughout

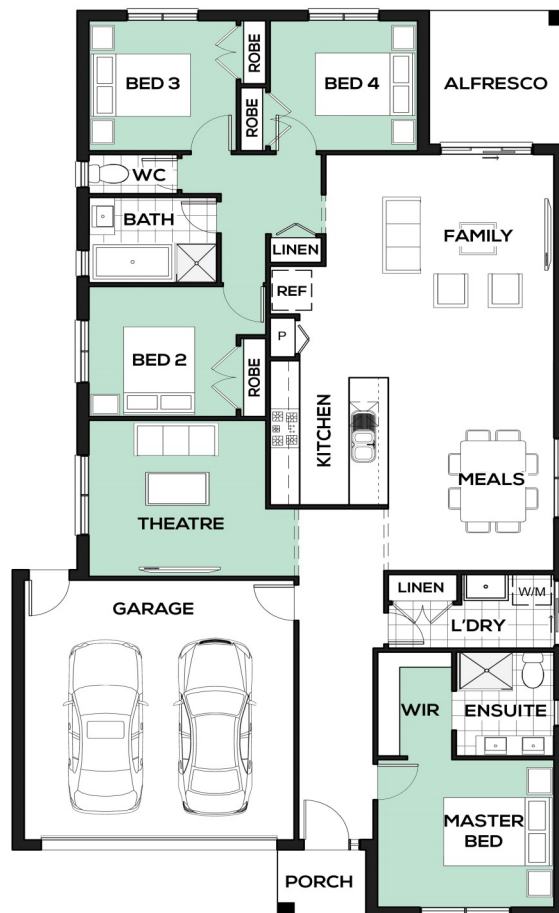
+

Turn Key Inclusions Value Pack Included

Colour Concrete Driveway (up to 30m²)
 Block out Blinds to all Openable Windows
 Wall Mounted Clothes Line
 Pillar Letter Box



Lot 6147 Zippy Circuit
 Land Size: 350m²



The information contained in this flyer is to be used as a guide only. The flyer was completed prior to engineering and construction of the particular home therefore design, engineering, dimensions, fittings and specifications are subject to change and will be specified in the final purchase and/or construction contract. This flyer does not constitute part of an offer or contract. Prospective purchasers should rely on their own enquiries, legal advice and the contract of sale. Please contact our office if you have any questions regarding the property.